

# X4 HD

## Aluminium Heavy Duty Wheelchair



The **Aktiv X4 HD**, is a deluxe heavy duty aluminium wheelchair for everyday use with a strong, crash tested frame including a five year warranty. X4 HD has double cross brace and reinforced frame to provide additional strength to accommodate heavier users.

Easy to lift, store and transport, yet strong enough for constant use.

Flip back, removable armrests with comfortable PU arm pads are supplied as standard.

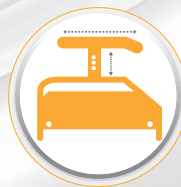
The backrest, legrest and rear wheels all have quick release mechanisms for easy transportation and storage. Height adjustable with a multi axle which allows for easy conversion between self-propel and transit wheels. The backrest and seat is covered with a generously padded nylon material for increased user comfort. Tension adjustable backrest straps, push button safety belt, stepper bar and anti-tippers are all supplied as standard. This chair comes with a slide on one piece footboard which fits easily over the standard footplates to give a strong full width platform. Footplates are height and angle adjustable as standard.



**Max User Weight:**  
**160kg / 25st**



# X4 HD



Interchangeable Armrest options available



Available in 12" or 24" PU rear wheels

## FEATURES

- Folding aluminium frame
- Fold down backrest
- Multiple axles to allow various seat heights / interchange from transit to self propel
- Flip back, detachable armrest with PU armpad (Standard Full Length)
- Plastic side panel clothes guard
- Swing away leg rest with black plastic foot plate (angle adjustable) & one piece footplate
- Available in solid PU Transit (12" rear wheels) or Self Propel (24" rear wheels) models
- 5cm comfort seat cushion

## OPTIONAL:

- Elevating leg rests
- Stump support
- Amputee setting
- Interchangeable armrests - Short Desk, Loop or Height Adjustable arm rests (see X Series options for further information)



Dismantle for transport



Easy fold away



Individual footplates w/removable footboard



Flip back armrests



56 / 61cm



46cm



47.5 - 51cm



43cm



21cm



35 - 48cm



90 degrees



70 degrees



107cm



97cm



76 / 81cm



12.4kg



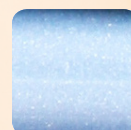
15.75kg



160kg



ISO 7176:19  
2001 Passed



Frame Colour

WHEEL TYPE	SEAT SIZE	ORDER CODE
Self Propel	56cm (22")	X4SP5646
Self Propel	61cm (24")	X4SP6146
Transit	56cm (22")	X4T5646
Transit	61cm (24")	X4T6146



Murrays Medical Equipment Ltd  
Airton Park, Airton Road  
Tallaght, Dublin 24

T: +44 (0) 1384 429700  
E: info@aktiv-wheelchairs.com